

Παθητικό Κτίριο

κτιΐΖΕΙΣ

Καλύτερα!

nZEB?



EUROPEAN UNION

THE EUROPEAN PARLIAMENT

THE COUNCIL

Brussels, 26 April 2018
(OR. en)

2016/0381 (COD)

PE-CONS 4/18

ENER 36
ENV 56
TRANS 46
ECOFIN 76
RECH 37
IA 34
CODEC 123

LEGISLATIVE ACTS AND OTHER INSTRUMENTS

Subject: DIRECTIVE OF THE EUROPEAN PARLIAMENT AND OF THE COUNCIL
amending Directive 2010/31/EU on the energy performance of buildings
and Directive 2012/27/EU on energy efficiency

Each Member State shall establish a long-term renovation strategy to support the renovation of the national stock of residential and non-residential buildings, both public and private, into a highly energy efficient and decarbonized building stock by 2050, facilitating the cost-effective transformation of existing buildings into nearly zero-energy buildings.

- (a) an overview of the national building stock, based, as appropriate, on statistical sampling and expected share of renovated buildings in 2020;
- (b) the identification of cost-effective approaches to renovation relevant to the building type and climatic zone, considering potential relevant trigger points, where applicable, in the life-cycle of the building;
- (c) policies and actions to stimulate cost-effective deep renovation of buildings, including staged deep renovation, and to support targeted cost-effective measures and renovation for example by introducing an optional scheme for building renovation passports;
- (d) an overview of policies and actions to target the worst performing segments of the national building stock, split-incentive dilemmas and market failures, and an outline of relevant national actions that contribute to the alleviation of energy poverty;
- (e) policies and actions to target all public buildings;
- (f) an overview of national initiatives to promote smart technologies and well-connected buildings and communities, as well as skills and education in the construction and energy efficiency sectors; and
- (g) an evidence-based estimate of expected energy savings and wider benefits, such as those related to health, safety and air quality.

20 μήνες!

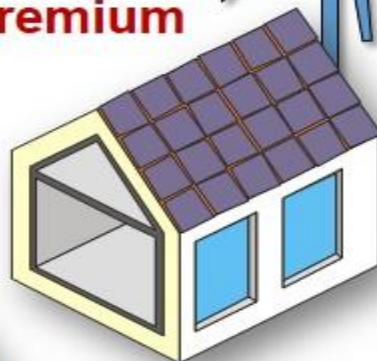


≥ 120

Renewable energy generation
[kWh_{PER}/(m²_{ground}*a)]

≥ 60

Premium



Plus



Classic



≤ 30



≤ 45

Renewable primary energy demand
[kWh_{PER}/(m²_{TFA}*a)]

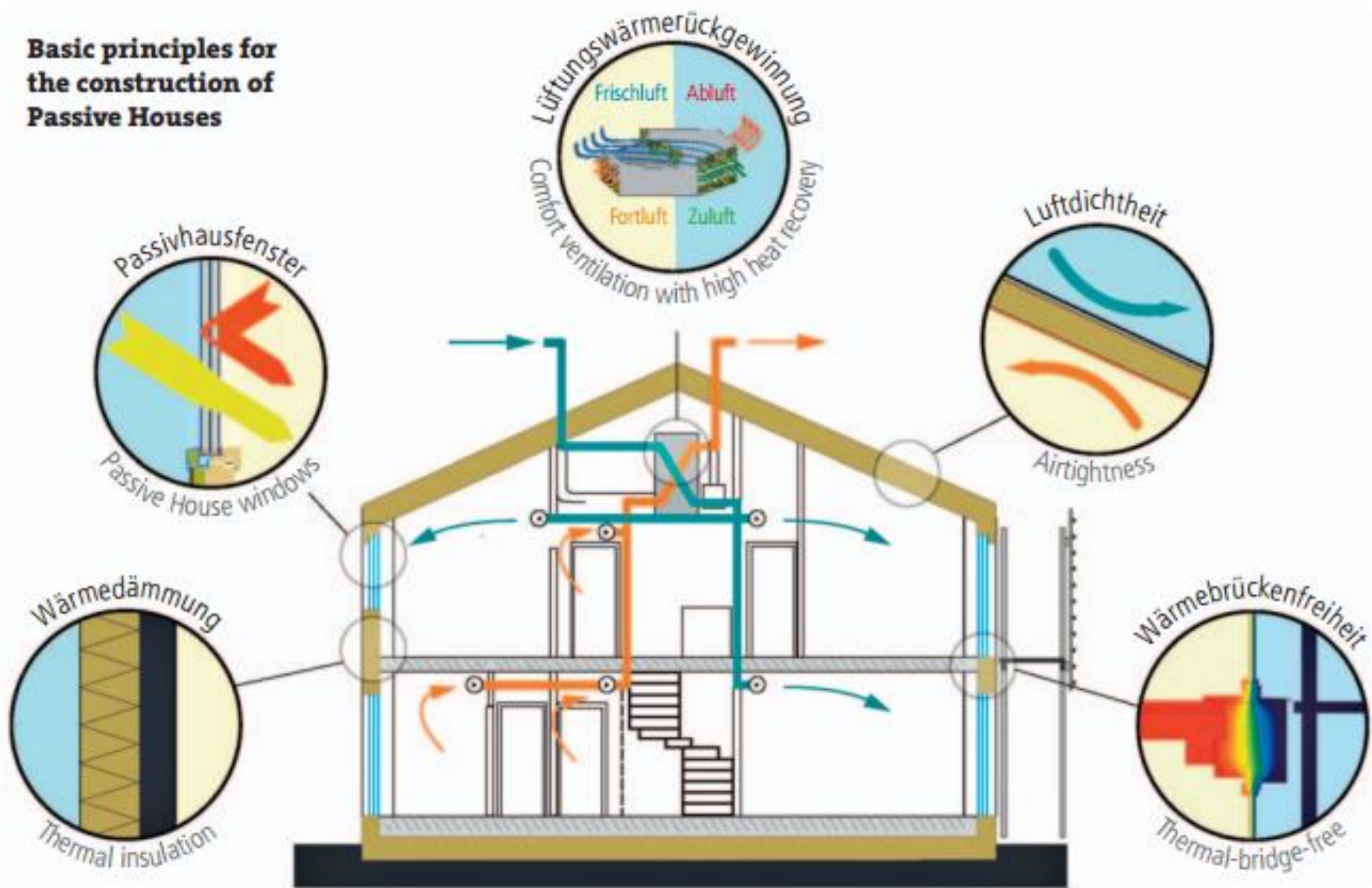


≤ 60

© Passive House Institute



Basic principles for the construction of Passive Houses



© COPYRIGHT PASSIVE HOUSE INSTITUTE 2015, WWW.PASSIVEHOUSE.COM











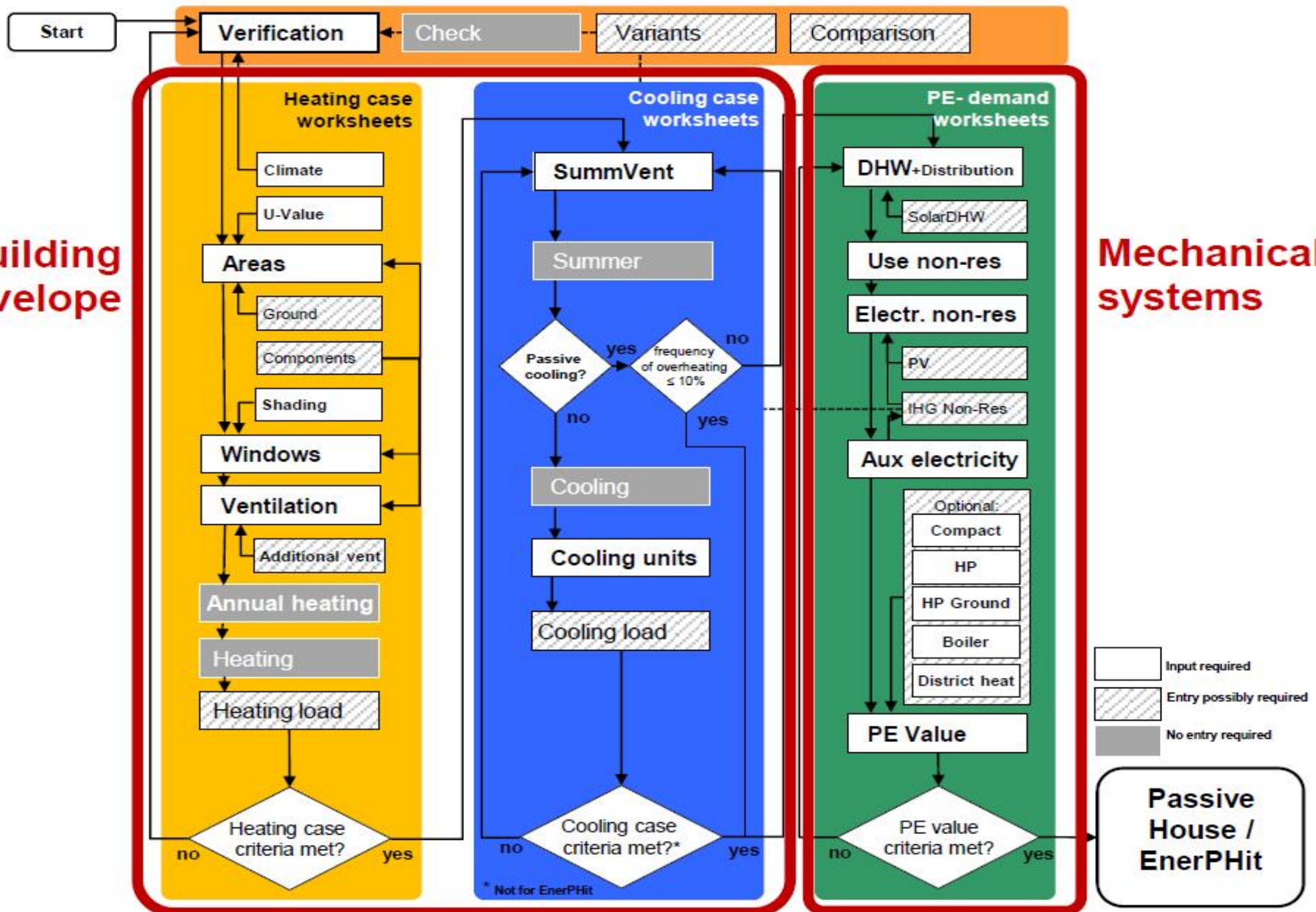
P H P P P

Passive House Planning Package

Version 9 (2015) © Passive House Institute

Building envelope

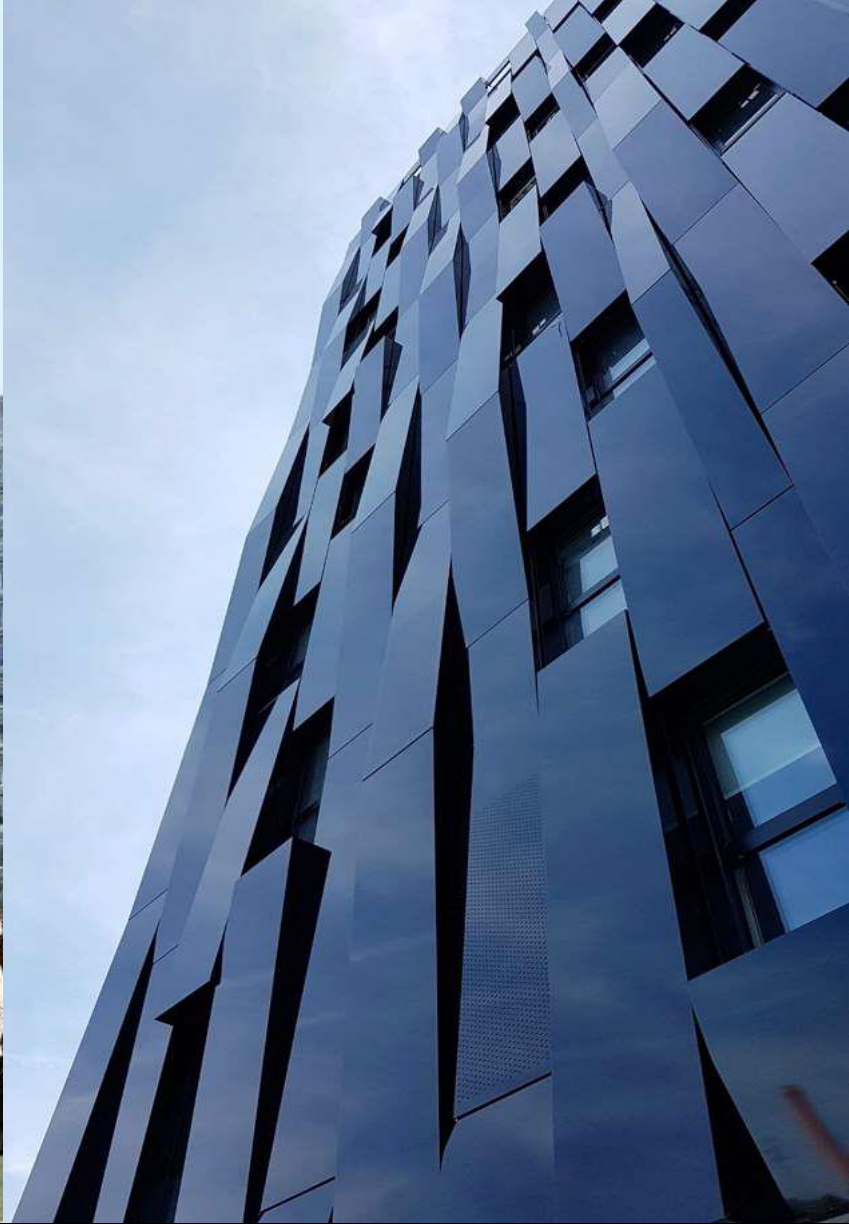
Mechanical systems

















GR-60063 **Leptokarya** (Macedonia)



GR-49081 **Kassiopi** (Ionian Islands)



GR- **Porto Rafti Markopoulo** (Attica)



GR-19014 **Ippokratios Politia**



GR-72100 **Agios Nikolaos** (Crete)



GR-25200 **Kato Achaia**
(Peloponnese)



GR-63073 **Sana Village Chalkidiki**
(Macedonia)



GR-25200 **Kato Achaia**
(Peloponnese)



GR-38221 **Volos** (Thessaly)
Geschosswohnungsbau



GR-25002 **KATO ALISSOS/PATRAS**
(Peloponnese)



GR-37100 EYKSINOYPOLI -
ALMIROS (Thessaly)



'16

GR-25200 KATO ACHAIA / PATRAS



GR-50100 Kozani (Macedonia)
Freistehendes Einfamilienhaus



'15, '16, '17

GR-15669 Papagou (Attica)



GR-38445 VOLOS (Thessaly)
Freistehendes Einfamilienhaus



GR-38500 Volos (Thessaly)



GR-38221 Volos (Thessaly)



'13, '14, '15, '16



GR-15236 Penteli (Attica)





IG PASSIVHAUS
Informations-Gemeinschaft Passivhaus Deutschland

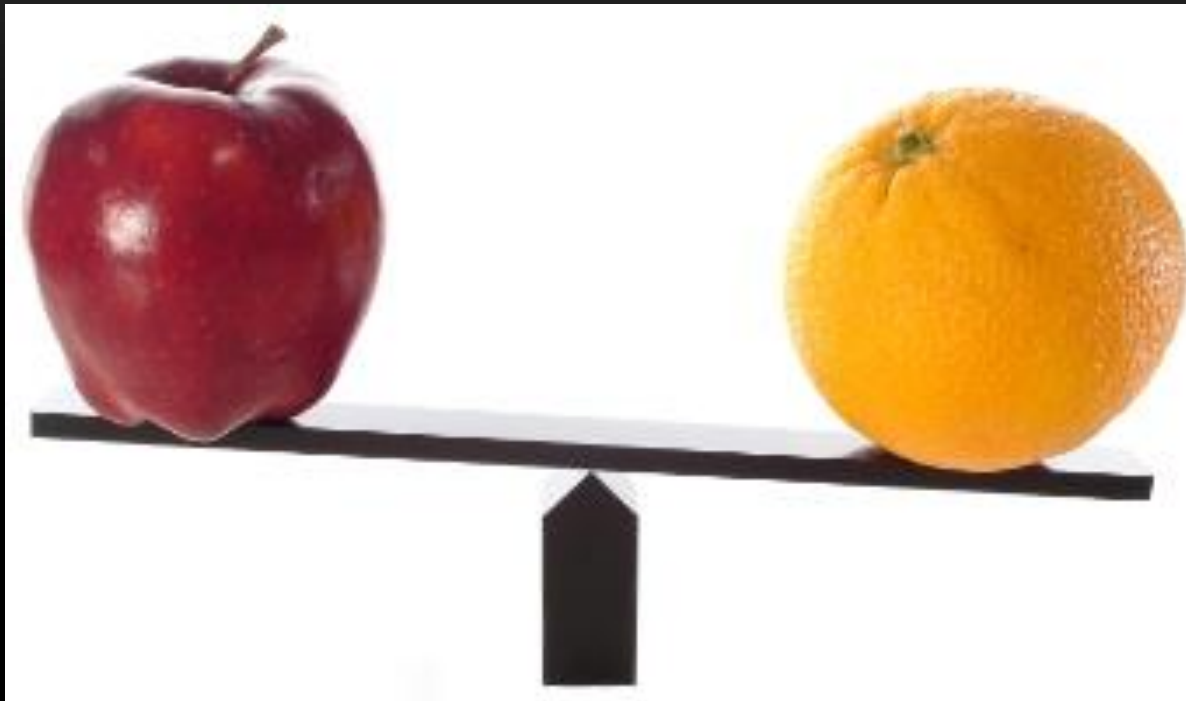


PASSIVHAUS
Austria



SIFIR ENERJİ ve PASİF EV DERNEĞİ
ZERO ENERGY and PASSIVE HOUSE ASSOCIATION





Passive house : the difference

Passive house : the red pill



This is your last chance. After this, there is no turning back. You take the blue pill—the story ends, you wake up in your bed and believe whatever you want to believe. You take the red pill—you stay in Wonderland, and I show you how deep the rabbit hole goes. Remember: all I'm offering is the truth, nothing more.

Your
comfort
zone



Where the
magic happens

Ευχαριστώ! Thank you!

Ελληνικό Ινστιτούτο Παθητικού Κτιρίου
Αναστάσεως 112, 15669 Παπάγου
Τηλ. 211 4081109
info@eipak.org, www.eipak.org

