

22^ο Συνέδριο IENE 2017 ΕΝΕΡΓΕΙΑ ΚΑΙ ΑΝΑΠΤΥΞΗ 2017

ΟΙ ΑΓΟΡΕΣ ΕΝΕΡΓΕΙΑΣ ΣΕ ΠΟΡΕΙΑ ΜΕΤΑΣΧΗΜΑΤΙΣΜΟΥ

Ερευνώντας για Υδρογονάνθρακες στον Ελλαδικό Χώρο

ΕΛΛΗΝΙΚΗ ΔΙΑΧΕΙΡΙΣΤΙΚΗ ΕΤΑΙΡΕΙΑ ΥΔΡΟΓΟΝΑΝΘΡΑΚΩΝ ΑΕ

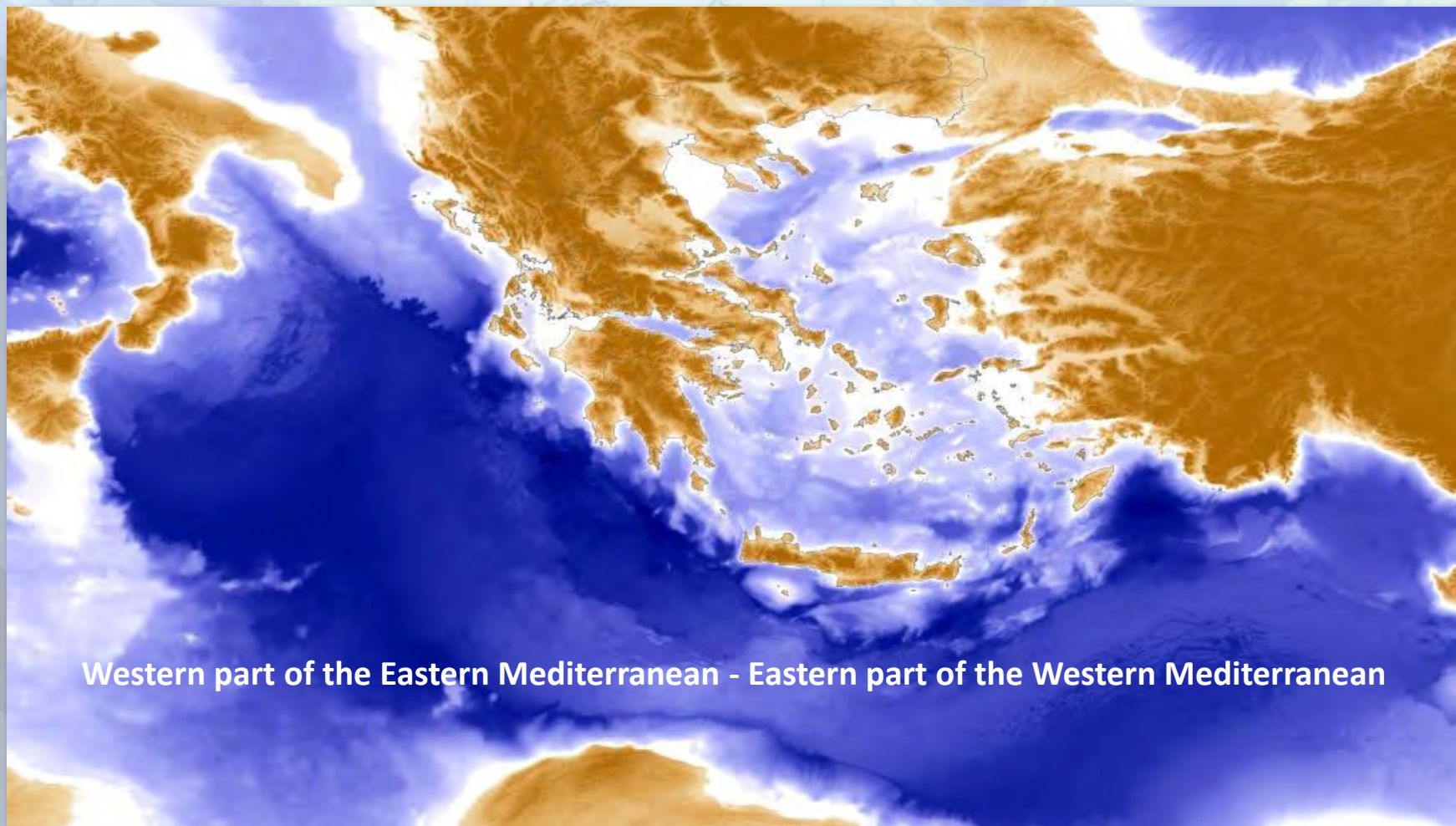


Γιάννης Μπασιάς

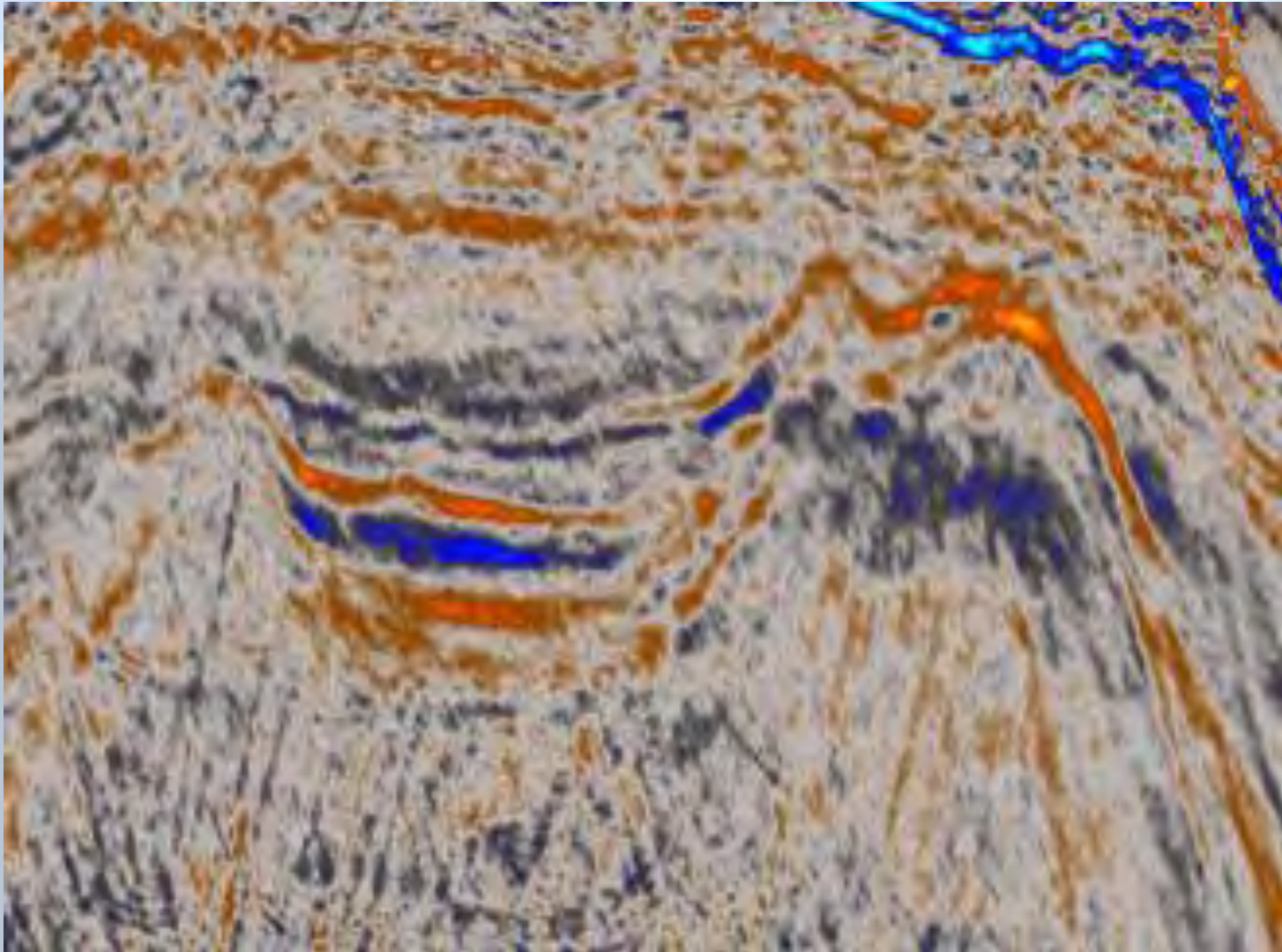
Πρόεδρος και Διευθύνων Σύμβουλος της ΕΔΕΥ

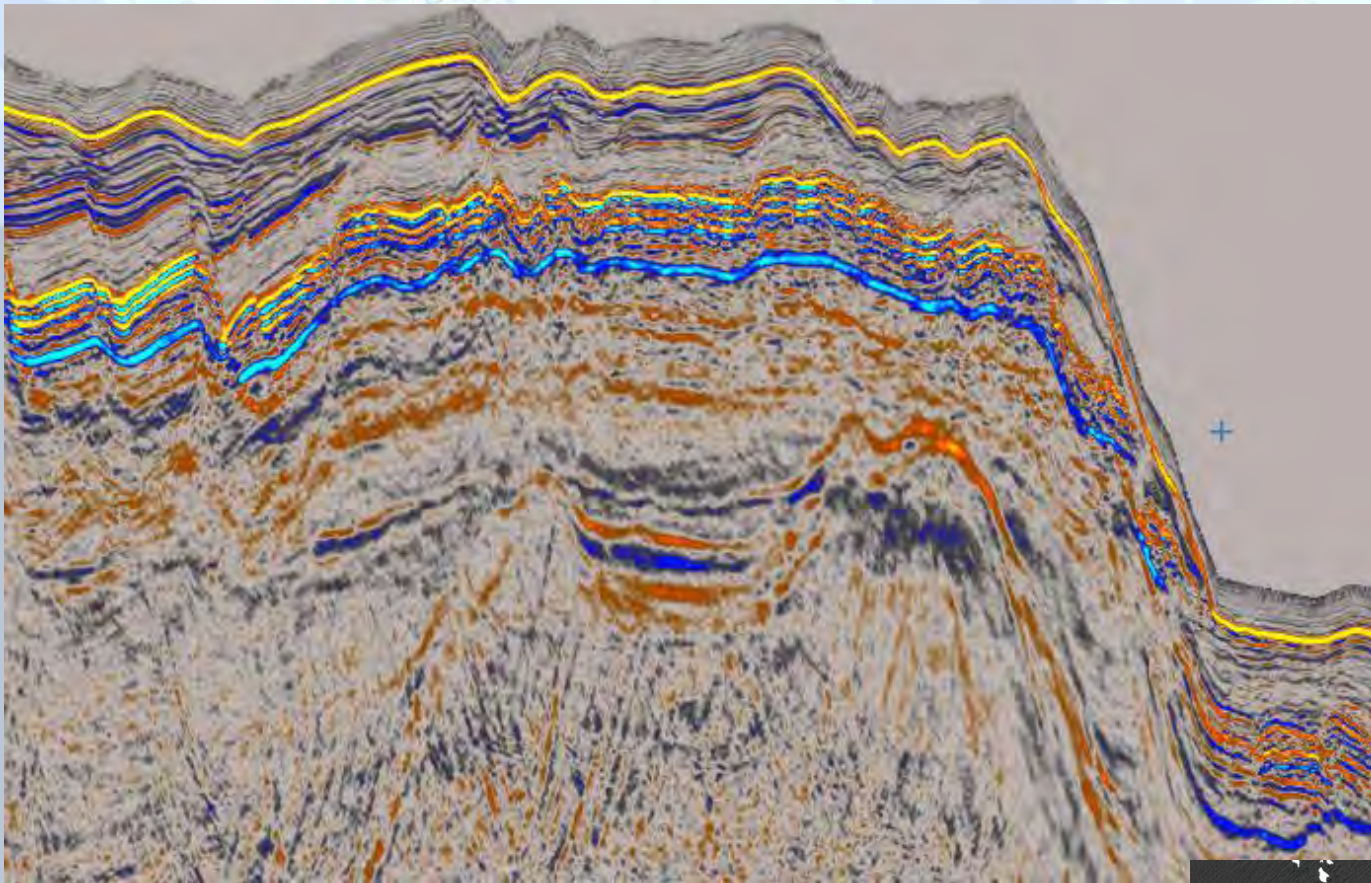
23 Νοεμβρίου 2017

www.greekhydrocarbons.gr



Western part of the Eastern Mediterranean - Eastern part of the Western Mediterranean



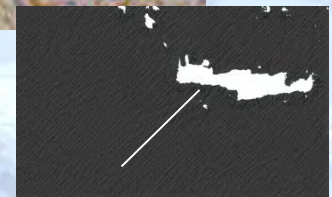


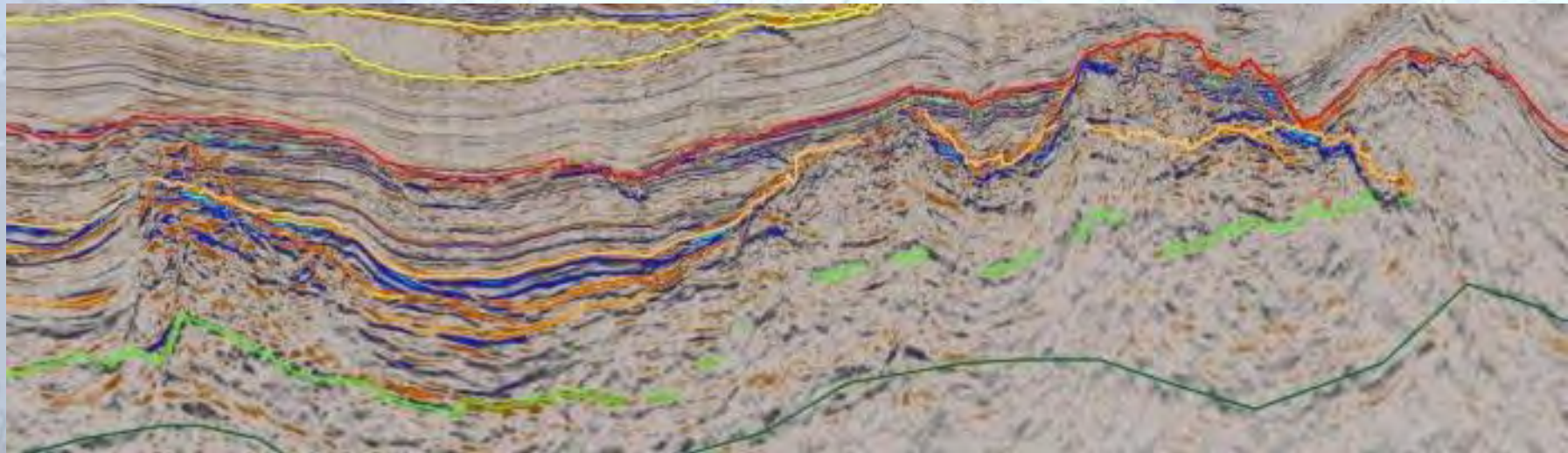
WD at structure: 430 m

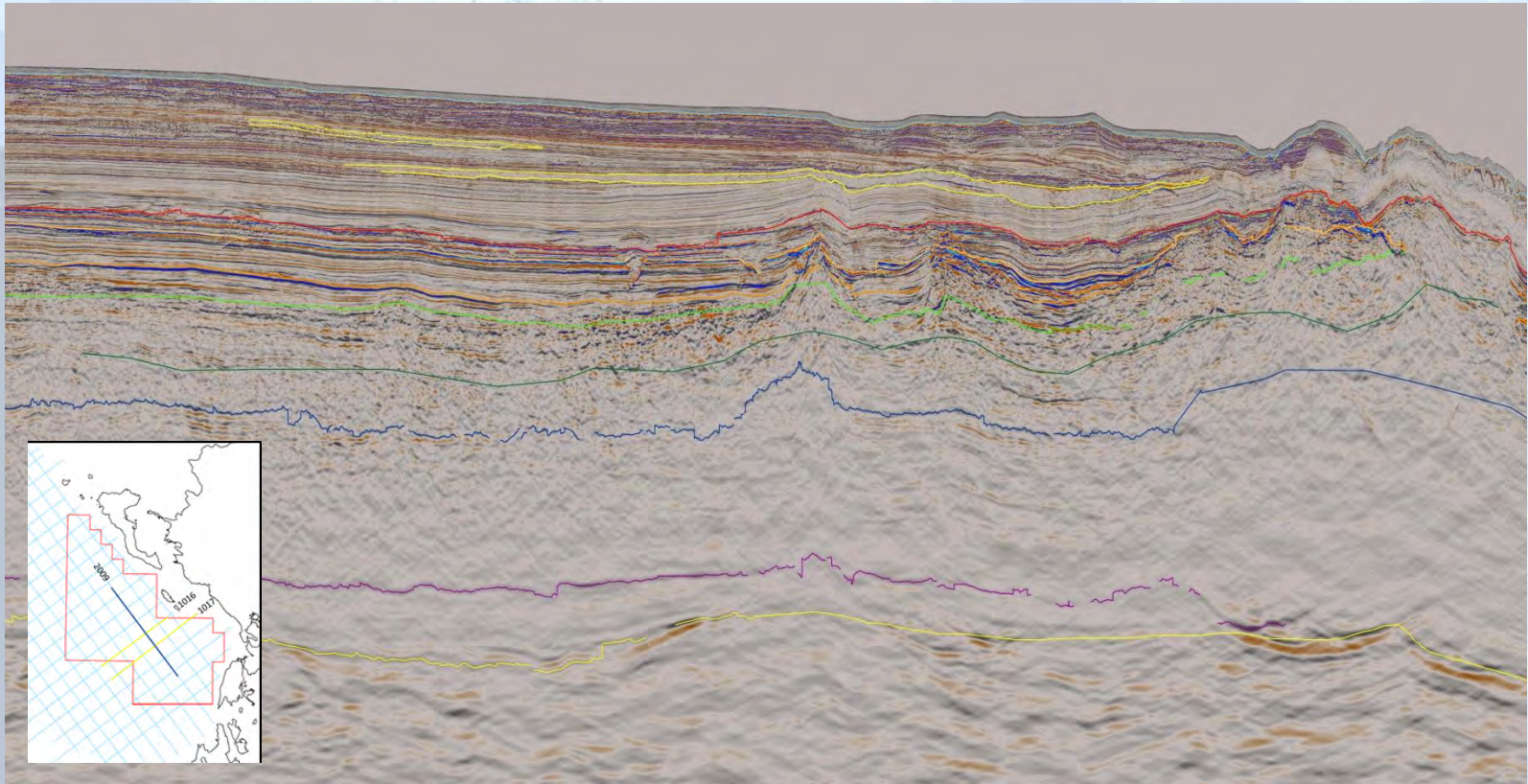
TWT of structure: 950 msec

Structure width: ca. 7 km

Reefal carbonates “atoll type”, sealed by onlapping lagoonal seds.
and Messinian Evaporites







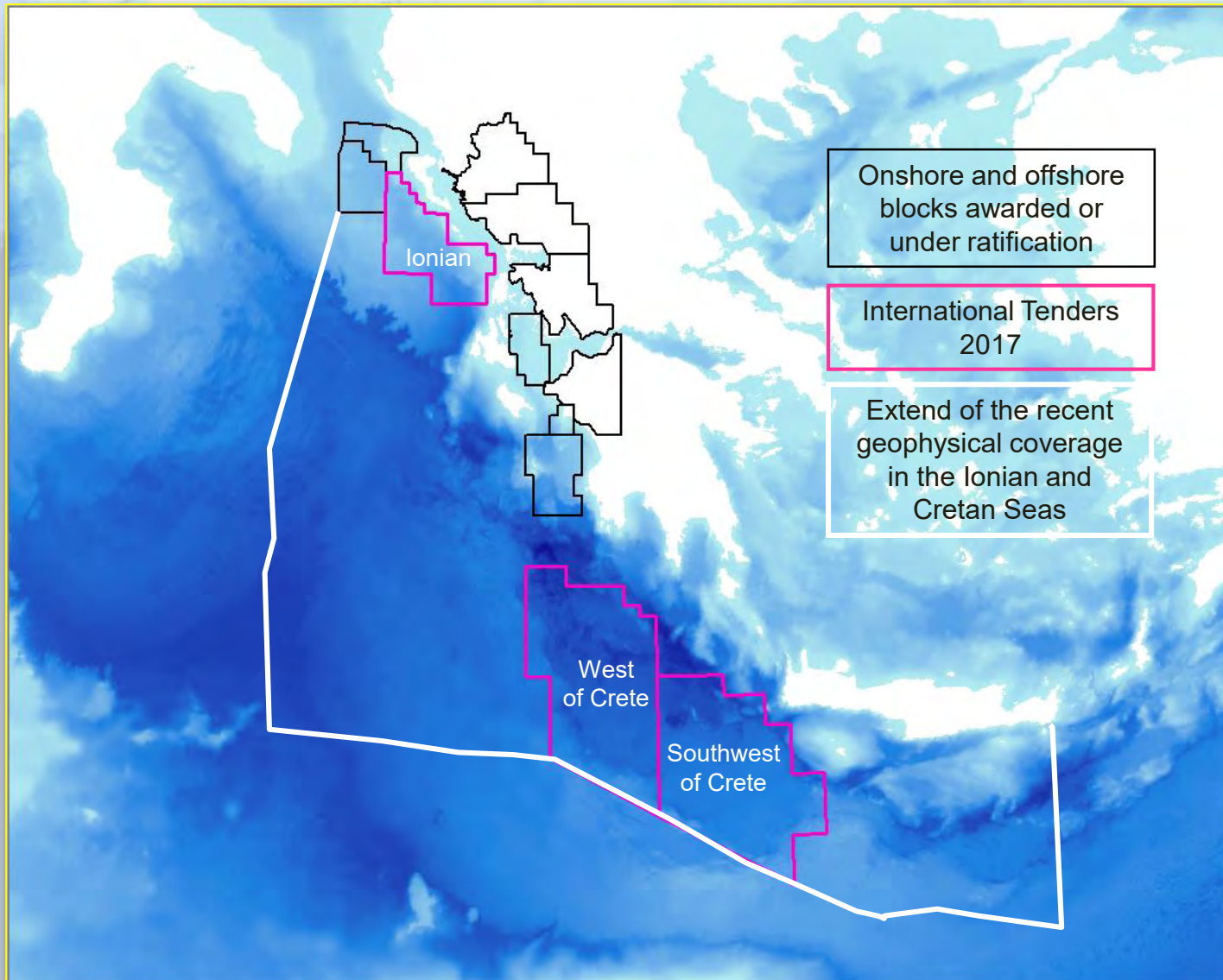
WD at structure: 1,590 m

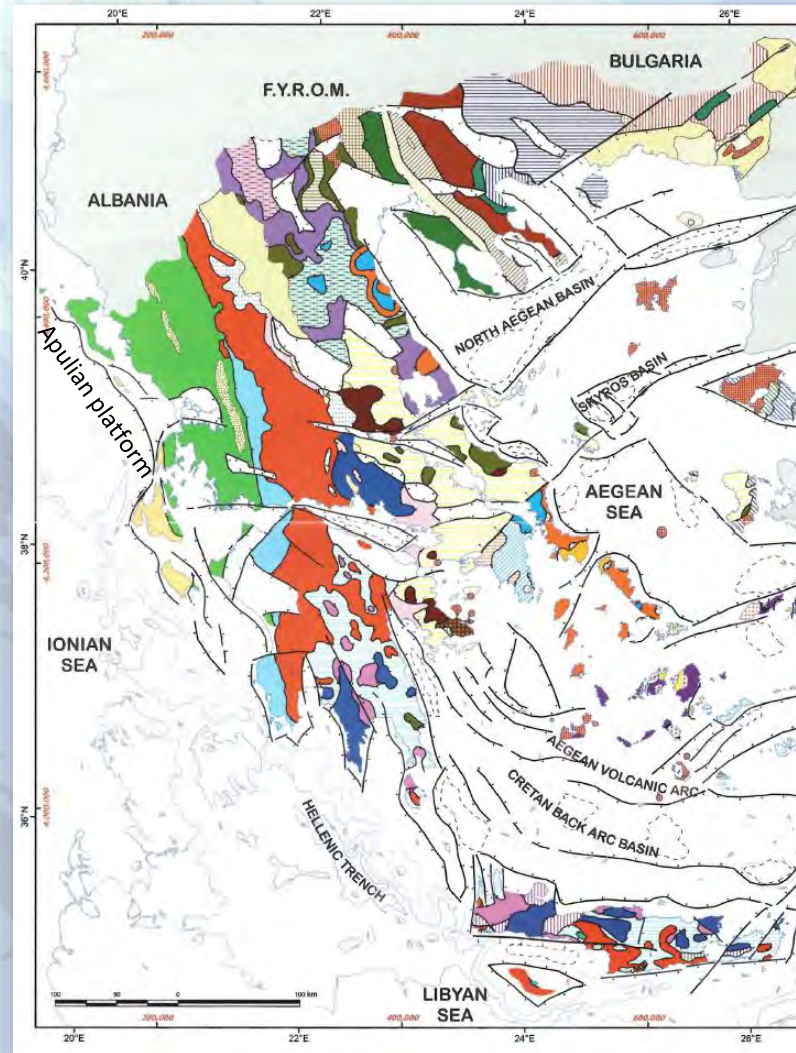
TWT of structure top: 2,9 sec

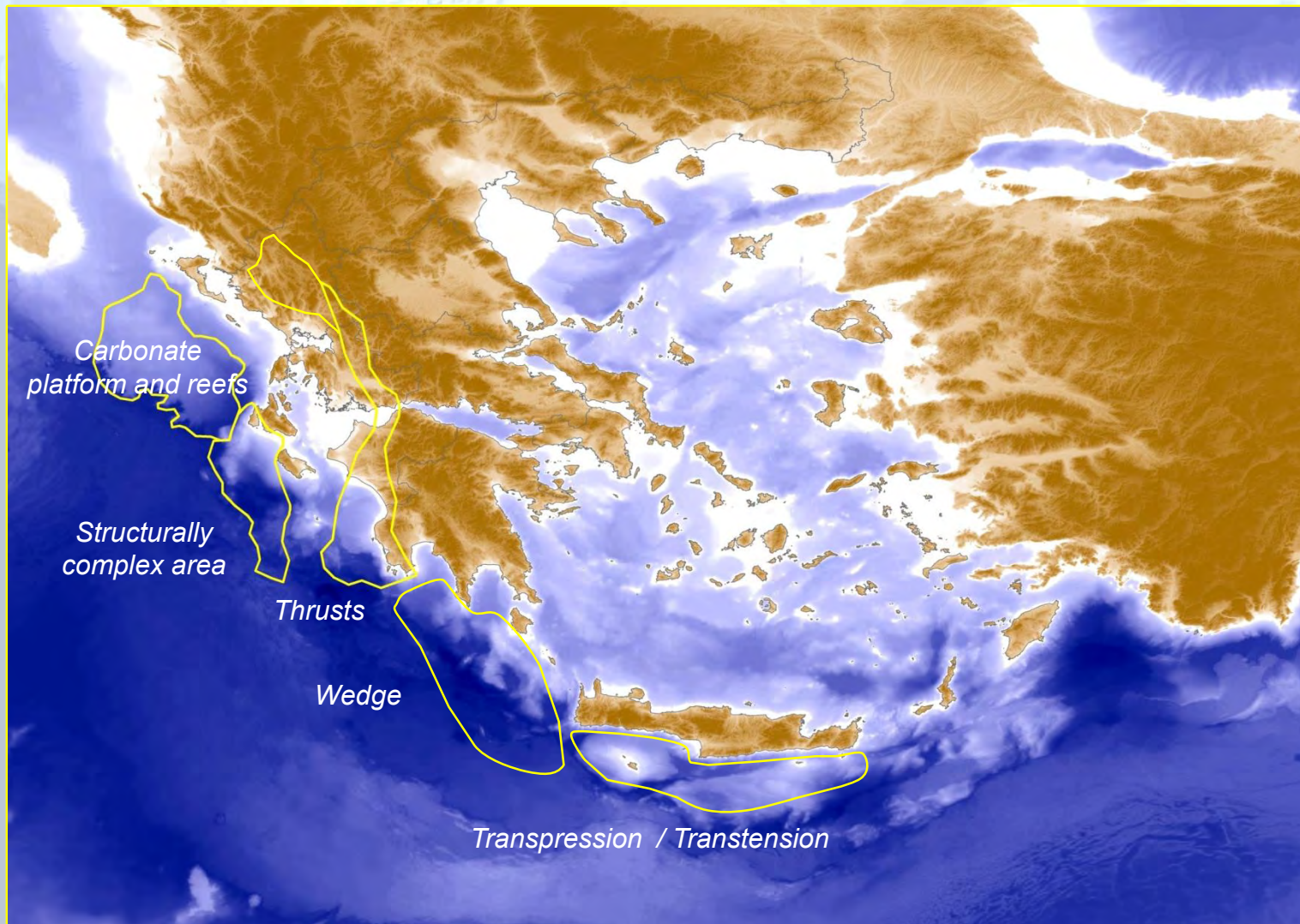
Isolated carbonate build up sealed by Neogene pelagic seds. and Evaporites

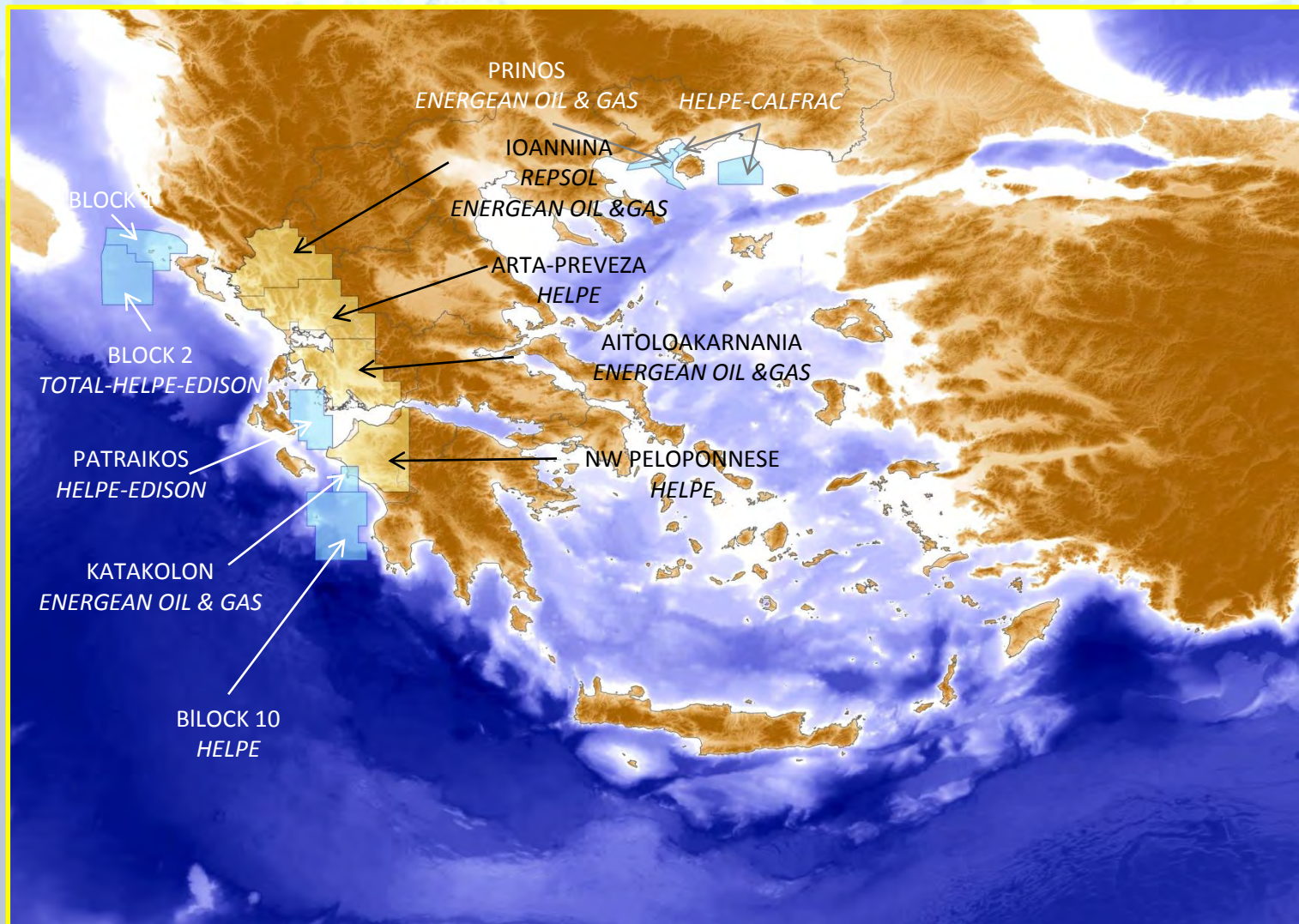
Max width: 9 km, 3 km each rim

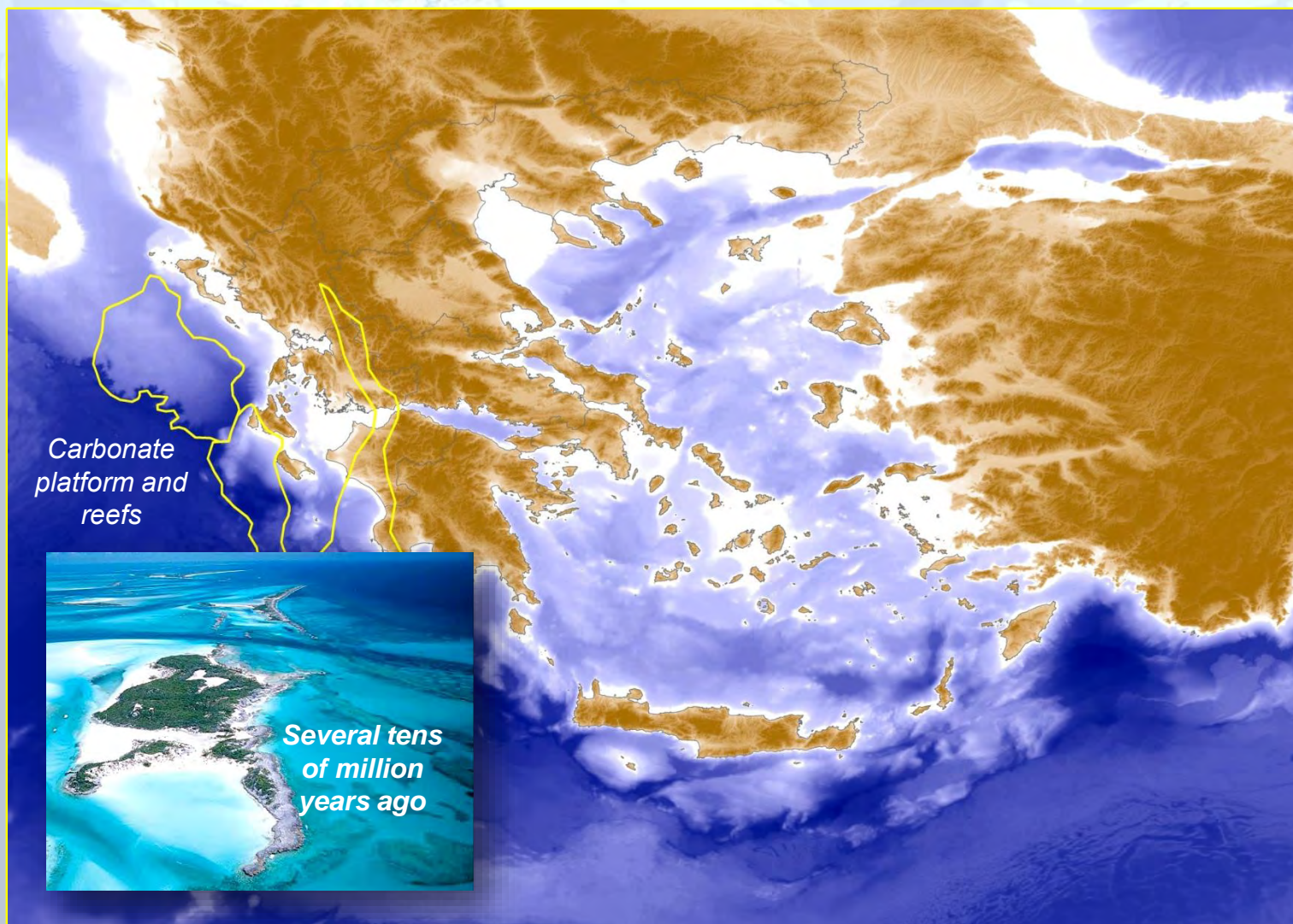
Various channels to be observed



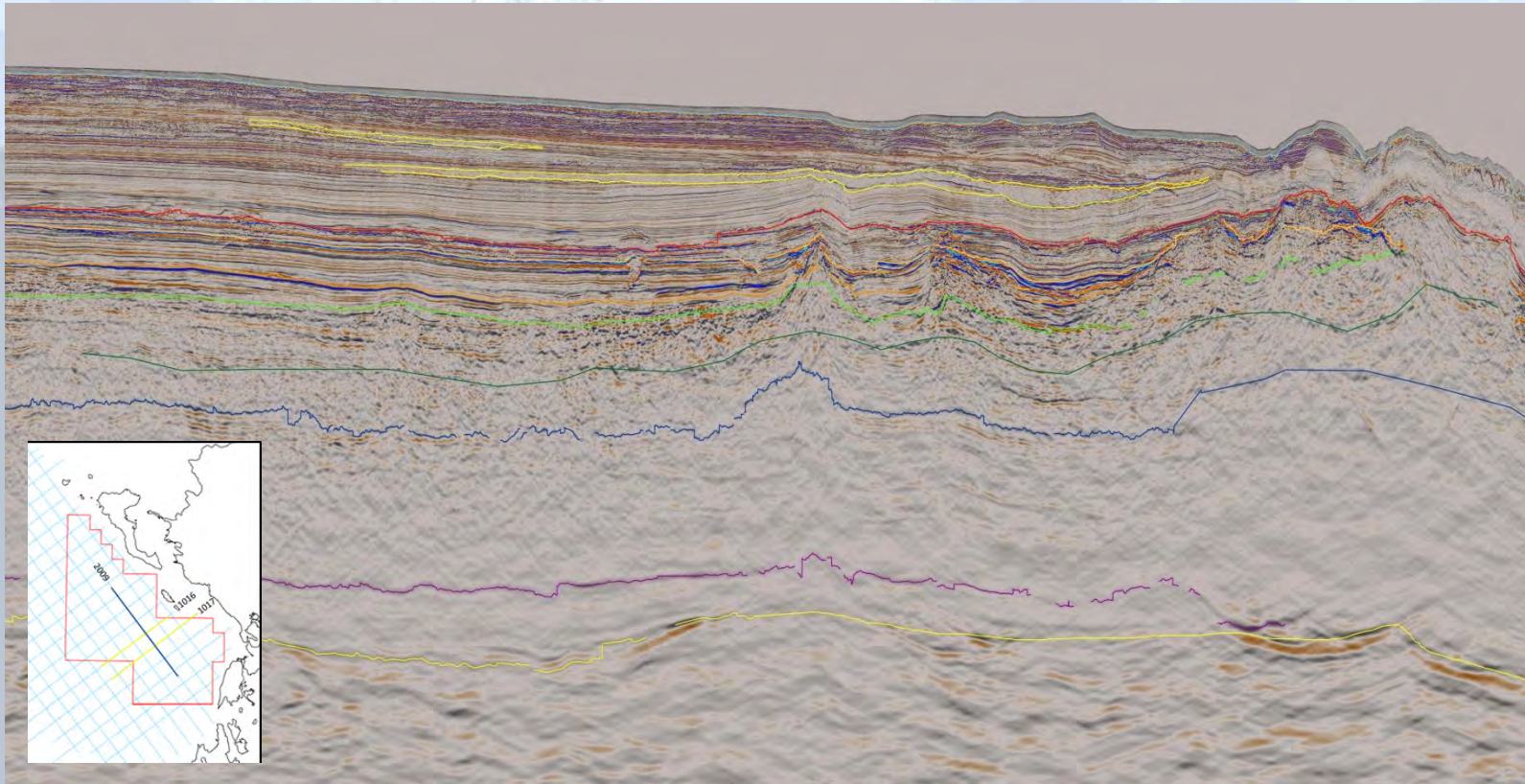












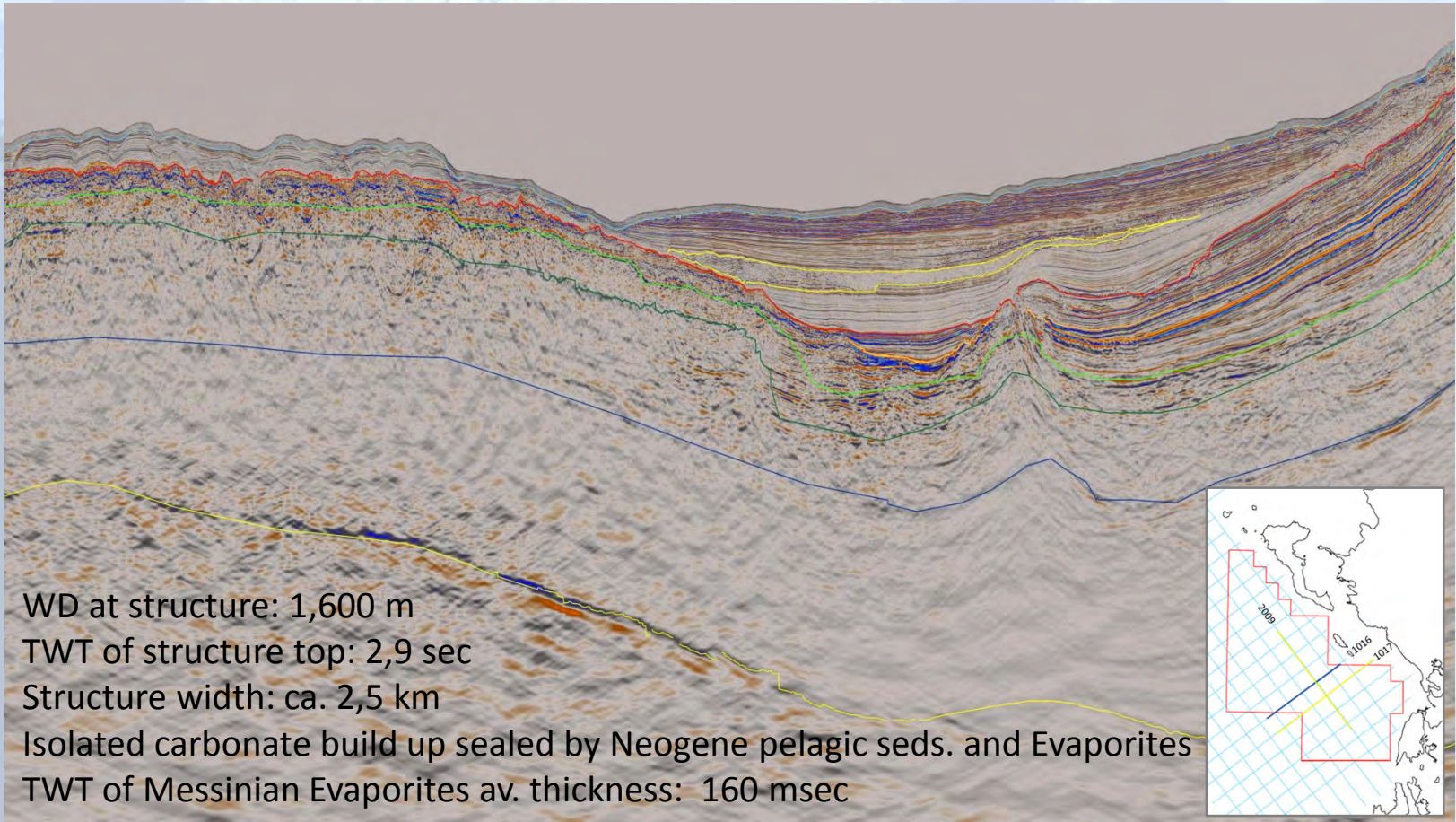
WD at structure: 1,590 m

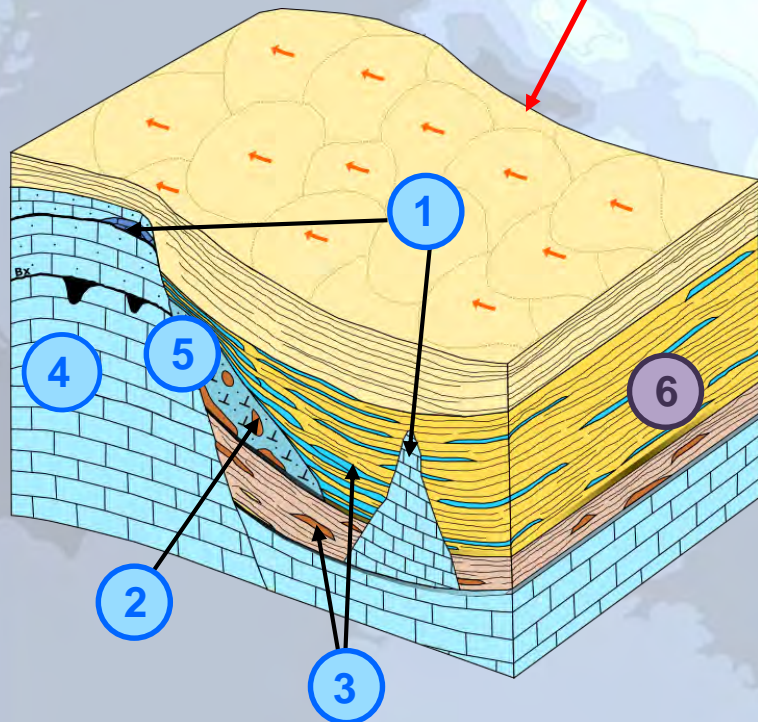
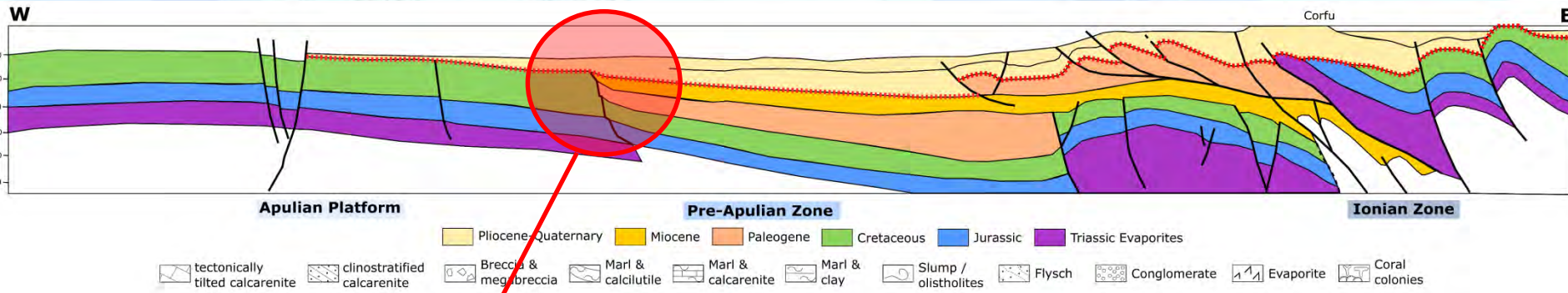
TWT of structure top: 2,9 sec

Isolated carbonate build up sealed by Neogene pelagic seds. and Evaporites

Max width: 9 km, 3 km each rim

Various channels to be observed

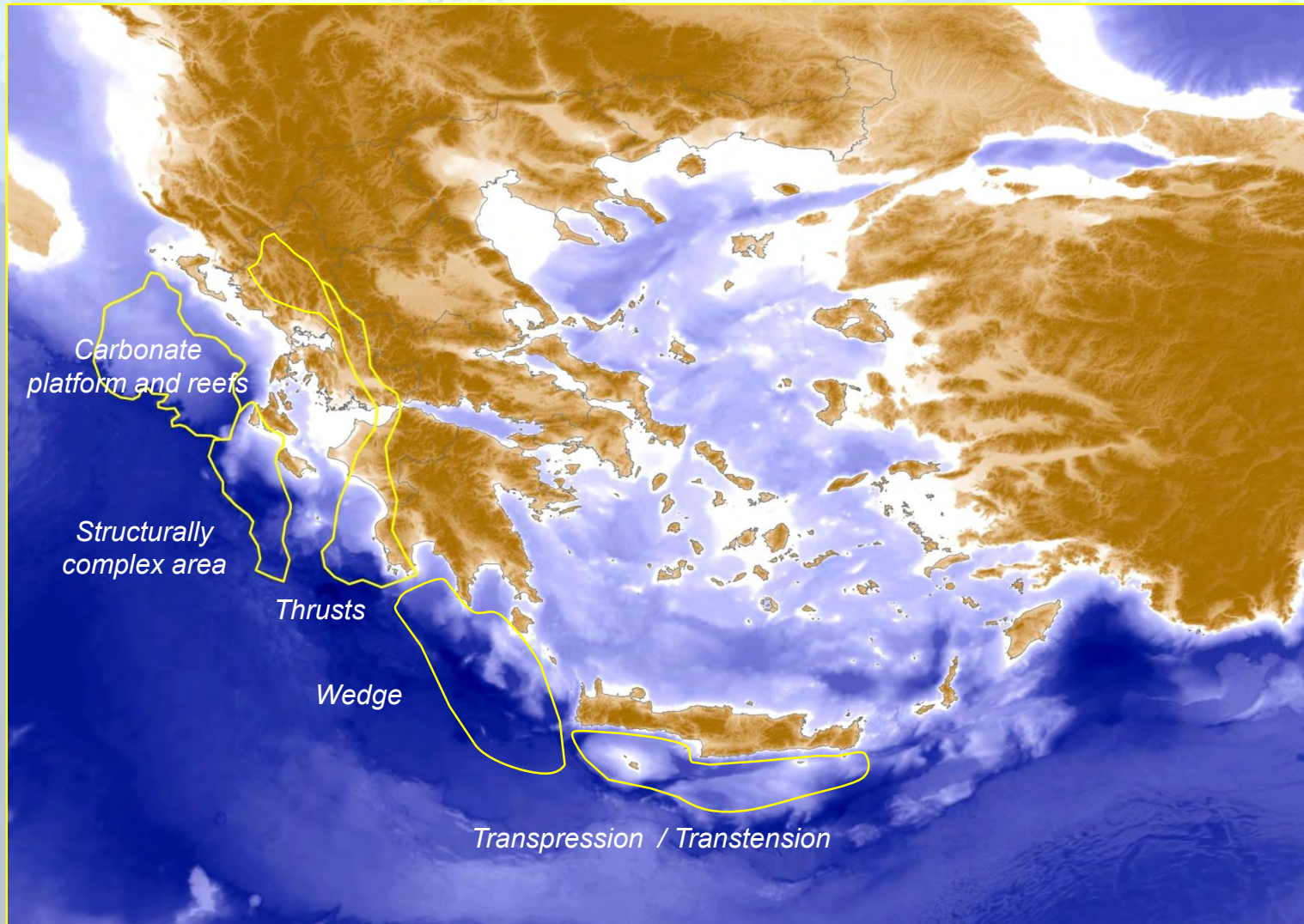


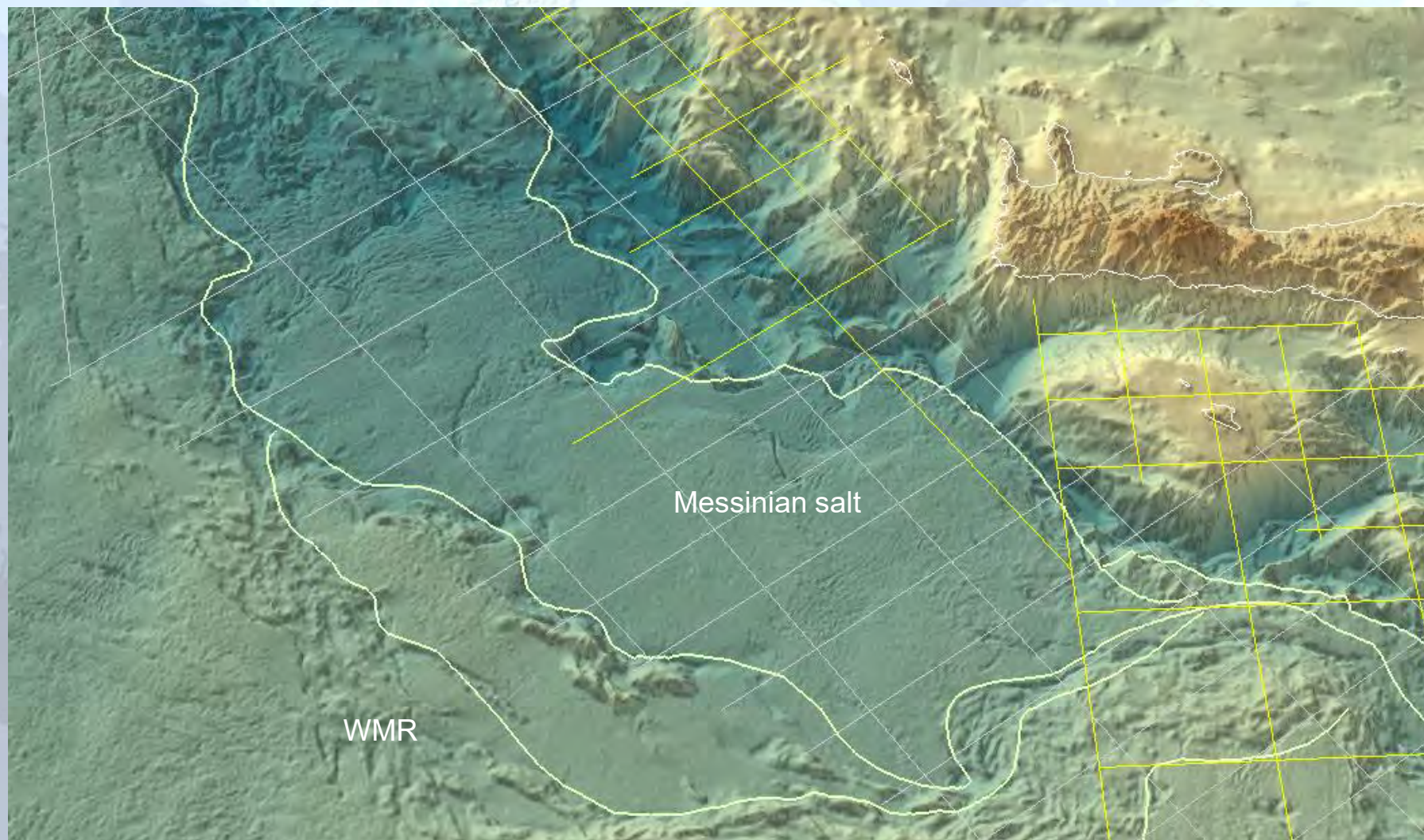


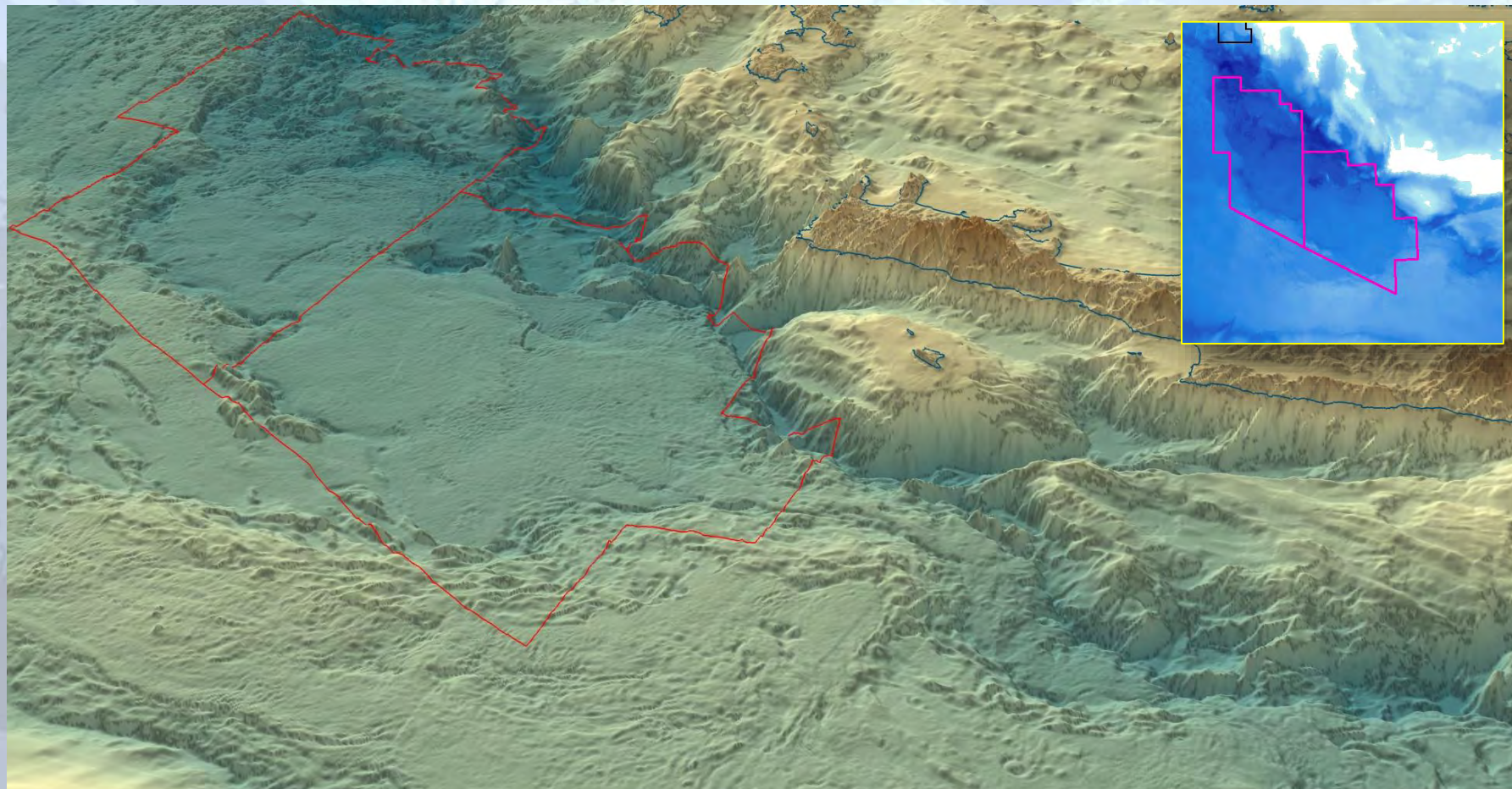
1. Shallow water carbonate build-ups
2. Nummulitic limestone carbonate debris flows
3. Microbreccious limestone and calcareous gravity-mass deposits (calciturbidites derived from the platform)
4. Karstified L. Jurassic-Mid Miocene platform deposits

Subordinate reservoirs:

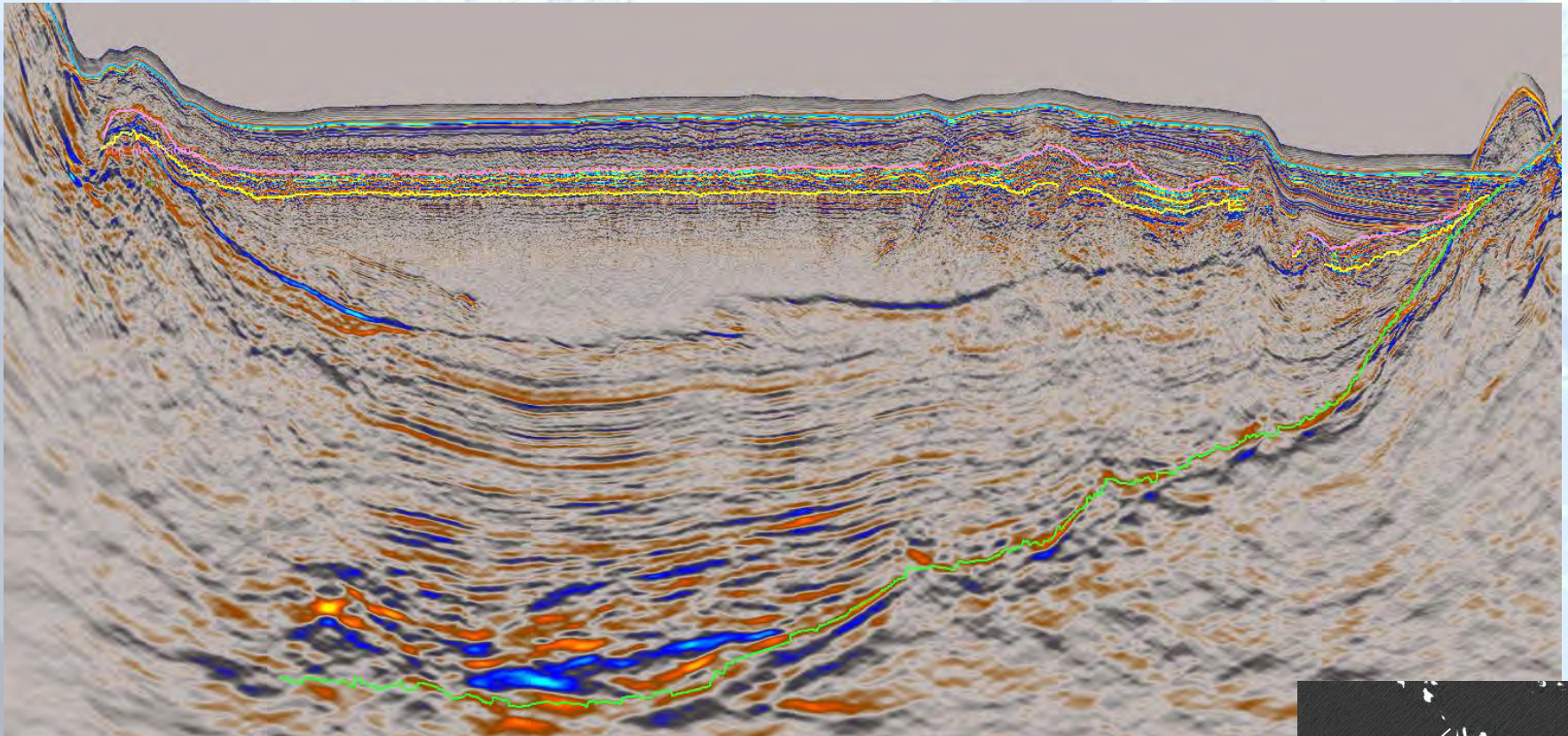
5. Shallow water karstified rudist limestone and collapsed breccias
6. Redeposited turbiditic sandstones and conglomerates (derived from the eastern slope of Pre-Apulian basin).





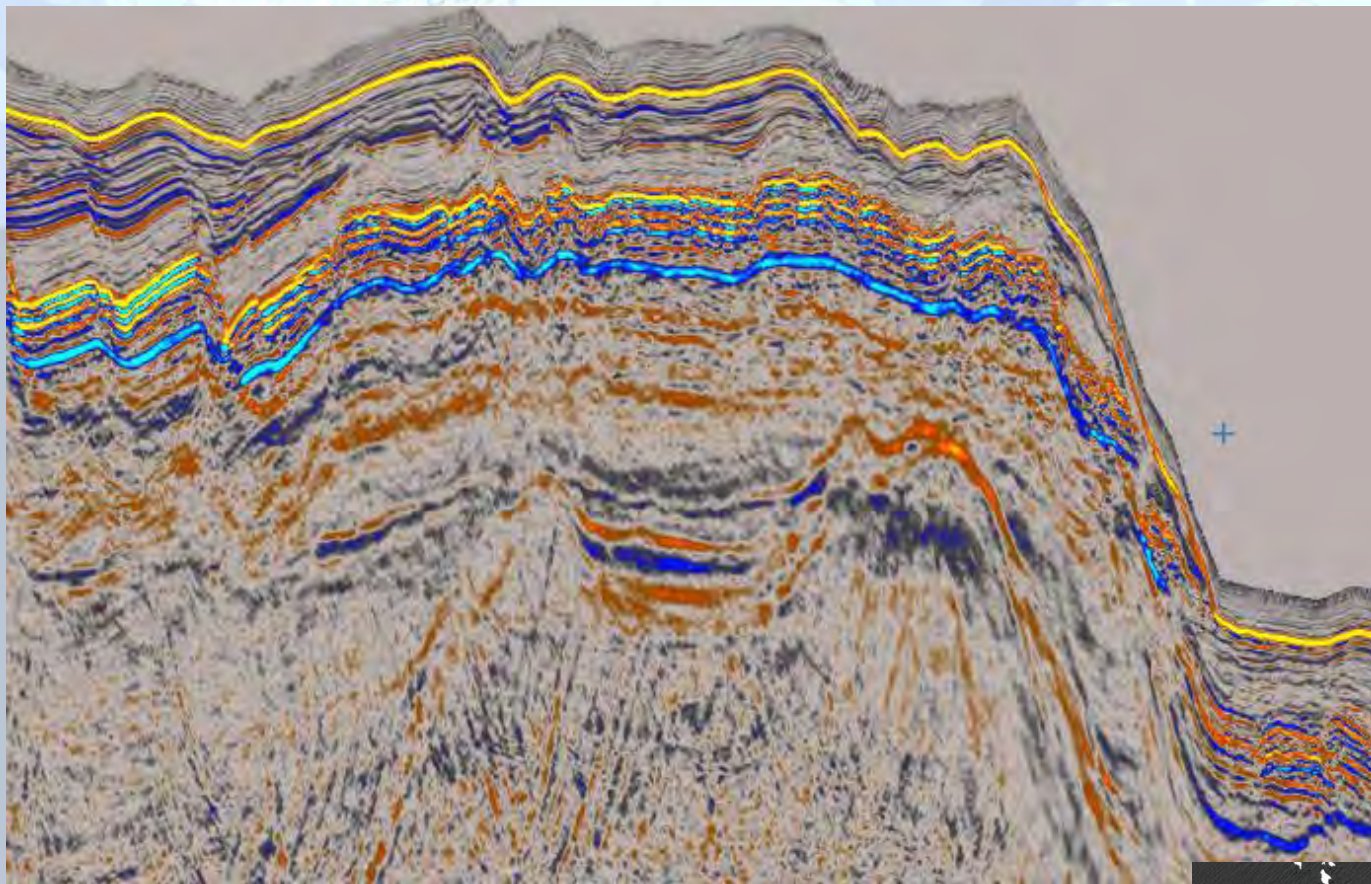


ΕΔΕΥΕ29 28 Οκτωβρίου 2017



WD at main structure: 2,250 m
TWT of main structure: 3,0 sec, associated by deeper structure occurrence
Main structure width: 2,4 to 2,7 km, secondary at least double size
TWT Messinian Salt thickness: min. 100 msec (seal)
Cretaceous carbonates erosional surface in green



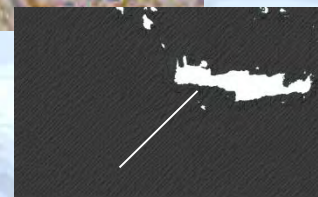


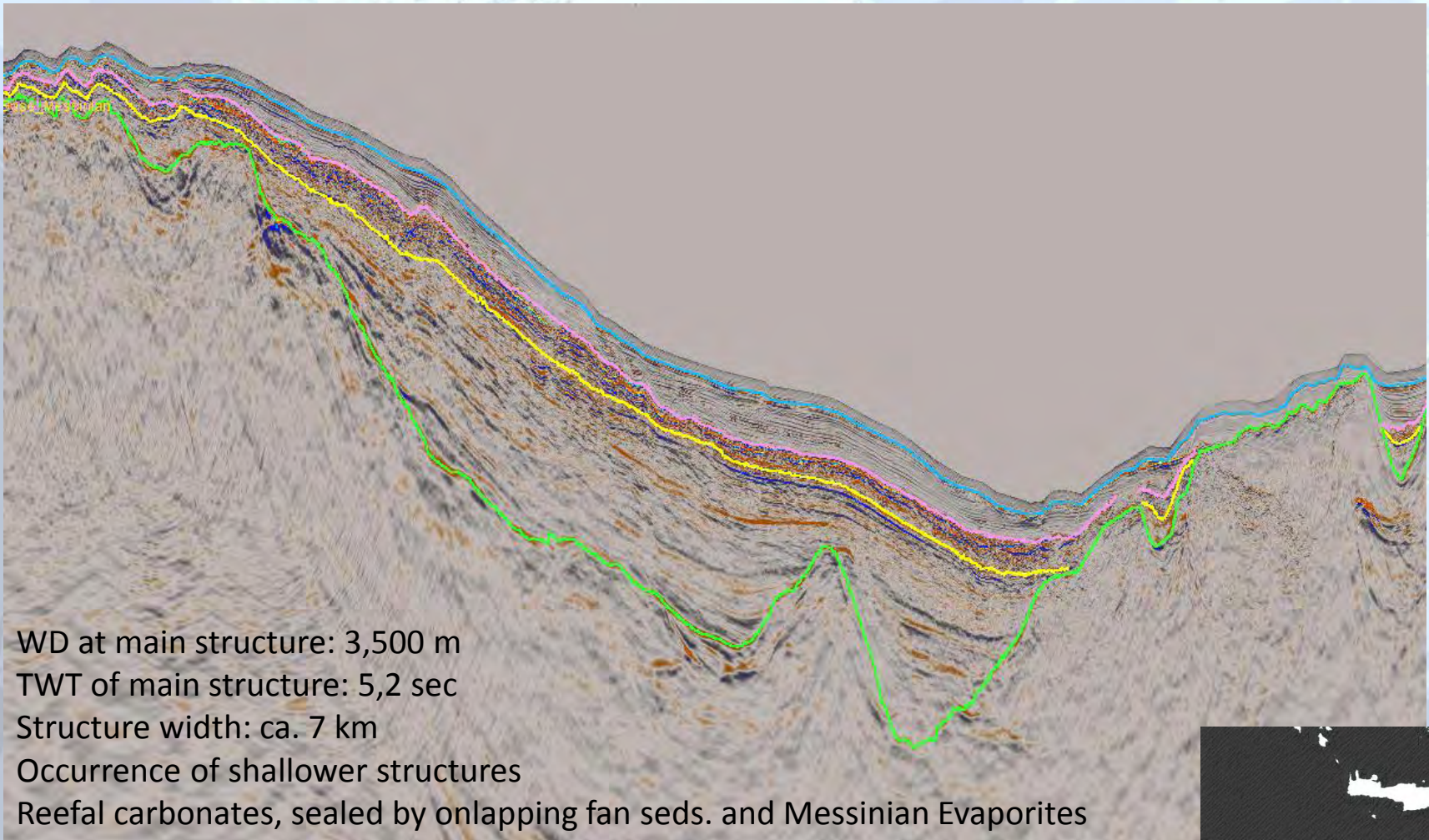
WD at structure: 430 m

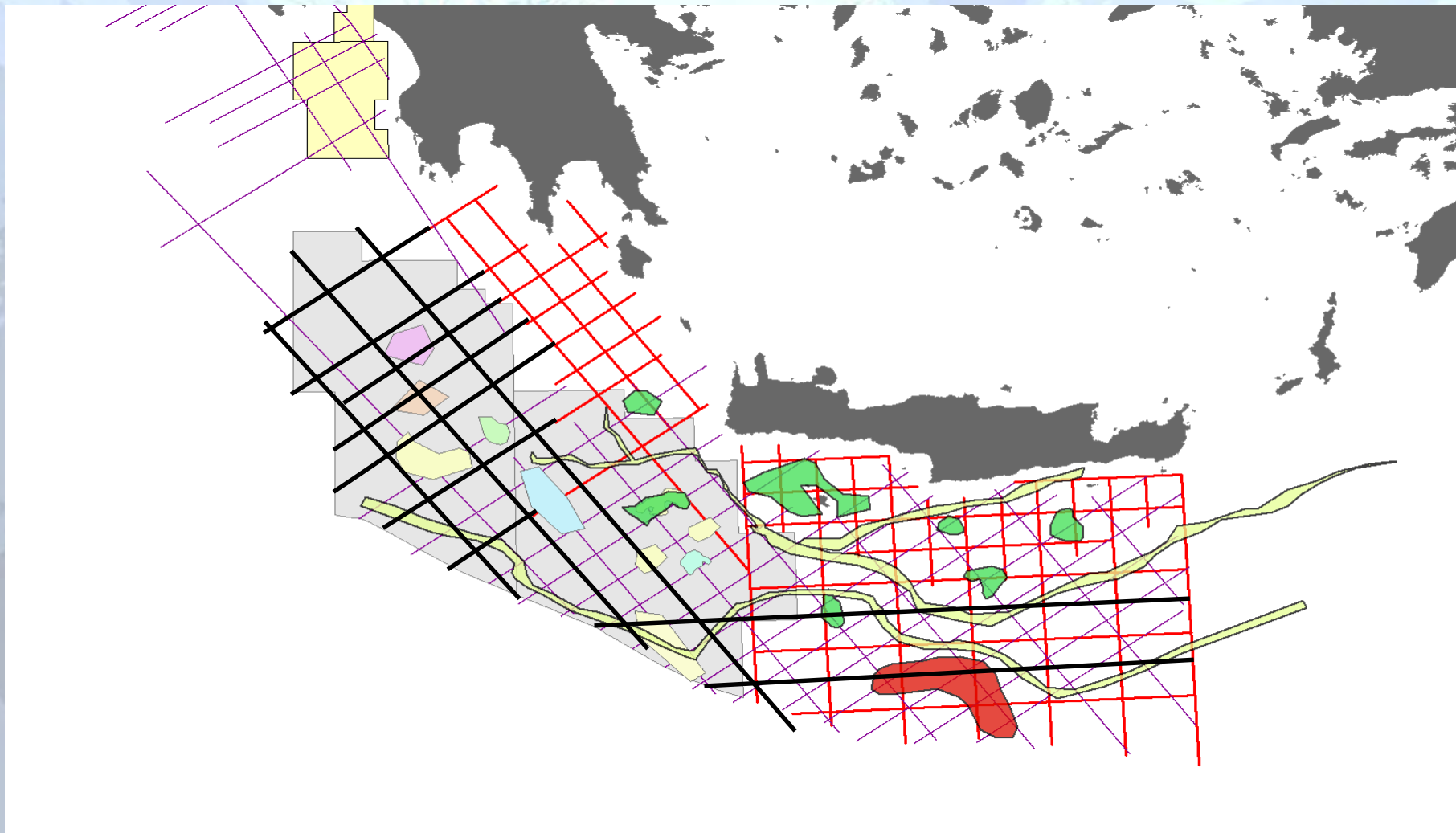
TWT of structure: 950 msec

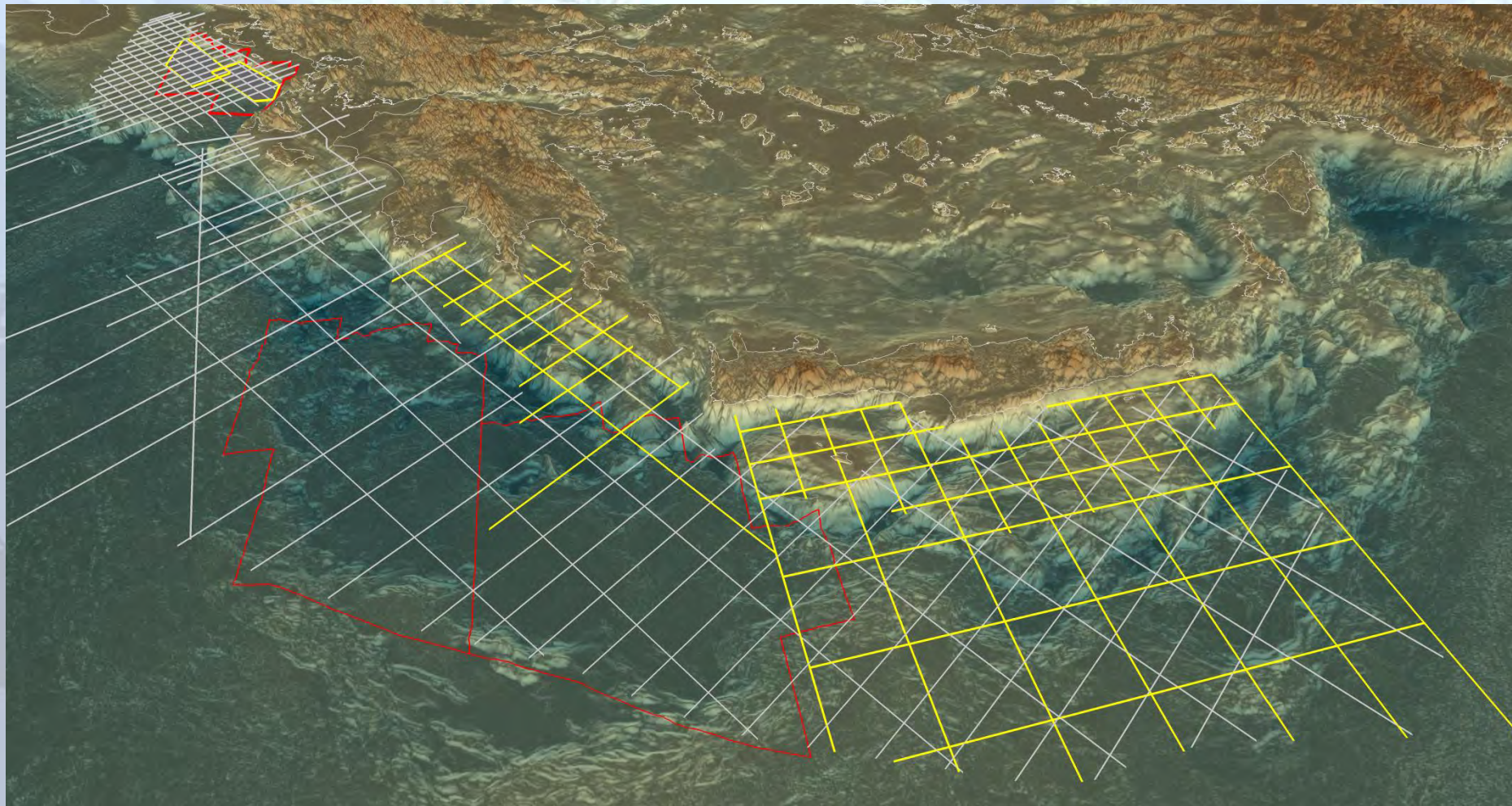
Structure width: ca. 7 km

Reefal carbonates “atoll type”, sealed by onlapping lagoonal sed.
and Messinian Evaporites









“A competent independent authority, exercising exclusively the Hellenic Republic’s rights to hydrocarbon resources (i.e. managing upstream activities and licensing)”

HHRM is a state company but not a NOC !

- **HHRM exercises the management of hydrocarbon rights on behalf of the state for the public benefit (prospecting, exploration and exploitation)**
- **HHRM, as lessor,**
 - enables E&P tender process
 - receives and evaluates bids
 - negotiates and
 - concludes Lease Agreements with third parties
- **The agreements are signed between HHRM and the Contractor and are submitted to the Minister of Environment and Energy for final approval**
- **The right to hydrocarbon prospecting is granted by decision of HHRM**

- **Submission of offers to HHRM begins with the publication of the Call for Tenders Notice in the Official Journal of the European Union (EU). *Ministerial Decision is already published (Aug. 11, 2017)***
- **Data Room review (Athens) opens the day of the Notice publication in the Official Journal of the European, also available in London, Oslo, Kuala Lumpur and Houston.**
- **Application deadline: 90 days after the Notice publication in the Official Journal of the EU**
- **Offers evaluation: 60 days after application deadline**
- **Lease Agreement execution: 3 months after the offers evaluation completion**
- **Court of Audit approval and Parliament ratification secure the procedure for the contractual E&P period (8+25 yrs)**

- **Minimum Exploration Work Programme**
- **Minimum Financial Commitment**
- **Royalty (-ies)**
- **Signature and Production bonuses**
- **Acreage (Surface) Fees**
- **Capital Depreciation**
- **Relinquishment**
- **Training and Facilities Support**

Technical Capacity (40%)

- Technical and operational experience and geological understanding
- Work programme quality : proposed budget
- HSE qualifications

Financial Capability (60%)

- (Royalties, Bonuses, Acreage Fees, Relinquishment, Depreciation, Training)

Type of Agreement: Lease Agreement



THANK YOU

come to see us or visit

www.greekhydrocarbons.gr